

## New Forest District (outside the National Park)

### Call for Sites Guidance Note

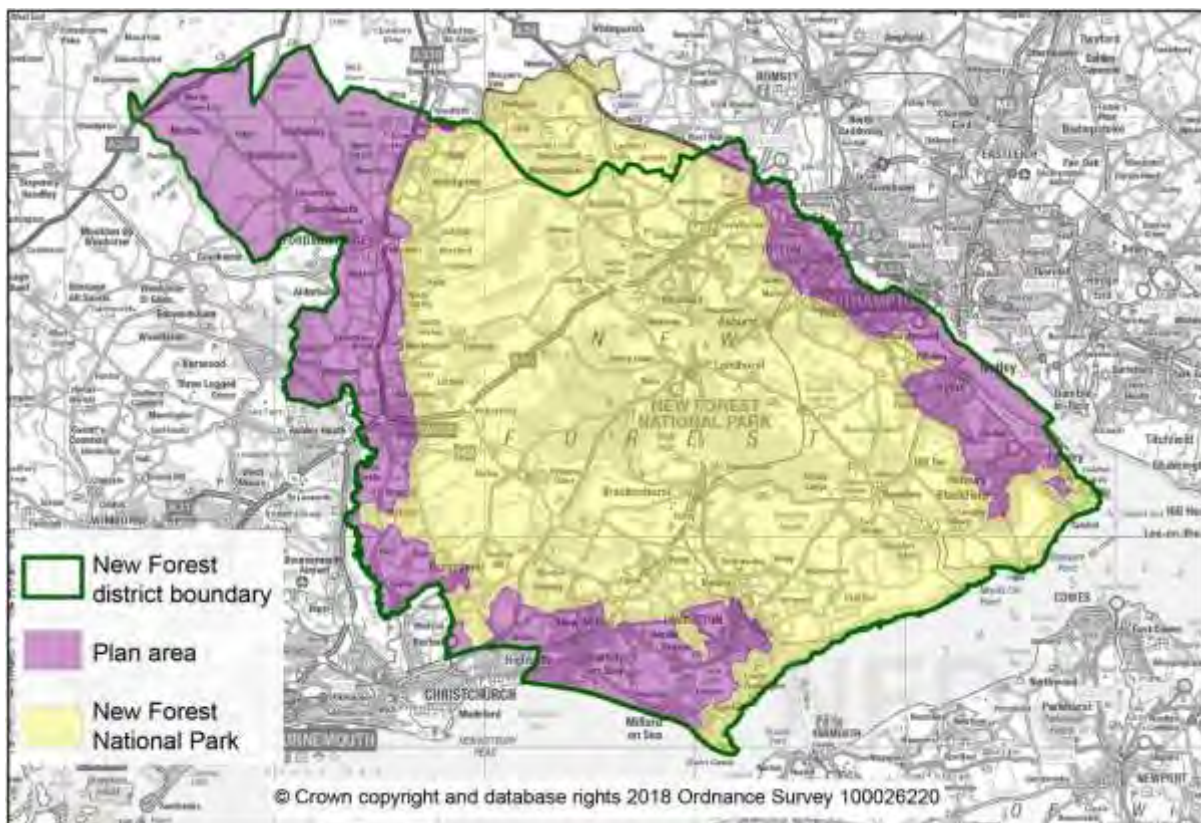
#### What is a Call for Sites?

The Call for Sites is an opportunity for individuals, developers and organisations to suggest land they would like the Council to consider for allocation for a particular purpose in the Local Plan. The Call for sites is open to both previously developed land and potential 'greenfield' sites. We are interested to hear about potential opportunities for housing (market and affordable), commercial and community uses, open space and land suitable for nature recovery or offsetting the environmental impacts of development.

This 'Call for Sites' relates to land which is within the Plan Area (New Forest District outside the National Park). The extent of the Plan Area is shown in purple in Figure 1 below.

We are especially interested to hear about potential opportunities for development, re-use or redevelopment in our towns and villages, or on previously developed land.

Figure 1: New Forest District (outside the National Park) Plan Area



#### Why are we undertaking a Call for Sites?

The Council is issuing a Call for Sites as part of the second part of the review of the Local Plan for the area which covers the period up to 2036.

The [Local Plan Part One: Planning Strategy \(adopted July 2020\)](#) allocates strategic sites that can accommodate at least 100 homes or other larger scale development needs. The Local Plan Part

One makes clear in Policy STR5 that to fully meet development targets additional smaller sites would be needed, and that these would be identified and allocated for development through the Part Two of the Local Plan Review.

The Call for Sites will help us to update our evidence base of potentially suitable and available land, both previously developed land and greenfield sites, for a range of possible uses. The National Planning Policy Framework requires Councils to maintain an up-to-date evidence base of potentially available land.

### **How should I submit a site suggestion to the Call for Sites?**

You can suggest a site by completing the site submission form (available here: <https://newforest.gov.uk/article/2766/Call-for-sites>) and returning it together with a site plan on an OS map base showing the clear location and boundary of the site. The form asks for details about the site including land ownership; current uses; proposed uses and when the site could be available for development. Site suggestions should be submitted by **Friday 24 September 2021**.

### **What will happen when I submit my site suggestion?**

Sites will be subject to a detailed assessment to evaluate whether they are suitable to be considered for selection as potential allocations in the New Forest District (outside the National Park) Local Plan Part 2 Review 2016-2036. As part of this process, sites will be put through a comprehensive sustainability appraisal assessment. Once the assessment is completed the results will be published as a Housing and Economic Land Availability Assessment (HELAA). Brownfield sites submitted will also be considered for inclusion on the Brownfield Land Register which will be published in updated form later this year.

### **Where should I send my site suggestion?**

You can send your site submissions by email (preferred) to: [policyandplans@nfdc.gov.uk](mailto:policyandplans@nfdc.gov.uk). You can also send them by post to: Policy and Plans Team, New Forest District Council, Appletree Court, Beaulieu Road, Lyndhurst, Hampshire SO43 7PA.

If you have any queries related to the Call for Sites please email [policyandplans@nfdc.gov.uk](mailto:policyandplans@nfdc.gov.uk) or call 02380 28 5345 for more information.